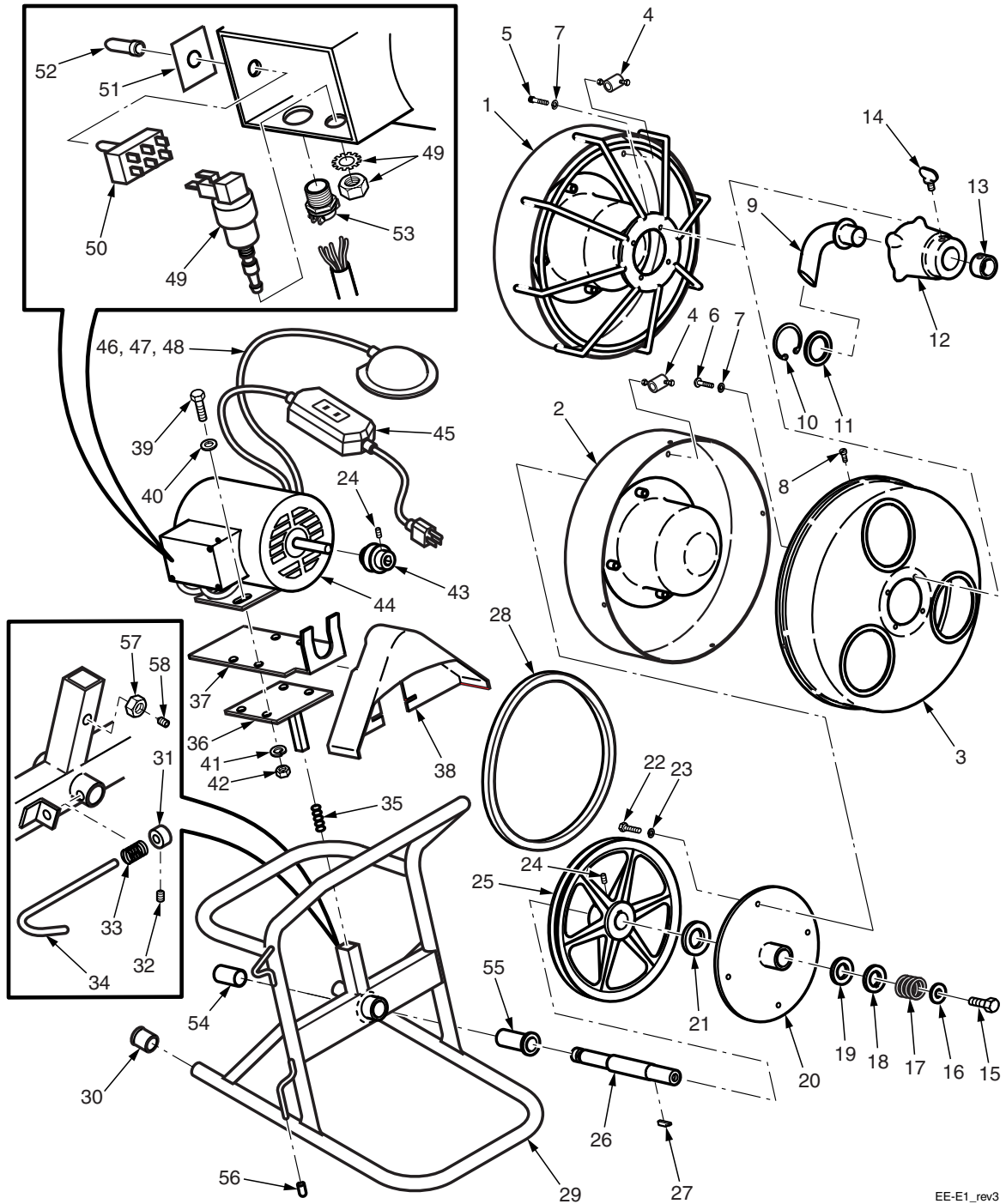


MODEL E DRAIN CLEANING MACHINE



EE-E1_rev3

MODEL E DRAIN CLEANING MACHINE

ITEM NUMBER	PART NUMBER	DESCRIPTION	AMT
1	ED-3*	Welded Drum/Cage Assembly	1
2	ED-1*	Rear Cable Drum w/Inner Drum	1
3	ED-2	Front Cable Drum	1
4	DN-6	Cable Anchor (used with ED-1 only)	1
5	MS102412HH	10-24 x 1/2 Hex Head Machine Screw	4
6	MS102438RH	10-24 x 3/8 Round Head Machine Screw	4
7	LW10	Lockwasher	4
8	MS83214SS	Stainless Steel Metal Screw	4
	ED-4A**	Guide Tube and Bracket Assembly	1
9	ED-4	Guide Tube	1
10	RR175	Retaining Ring	1
11	N-5-4	Retaining Washer	1
12	ED-5	Bracket	1
13	ED-6	Collar	1
14	WS516	5/16-18 Wing Screw	1
	EE-1A***	Drive Assembly w/Clutch	1
15	CSHH12201	1/2-20 x 1 Hex Head Capscrew	1
16	WA716P	Flatwasher	1
17	N-14	Spring	1
18	EE-3	Drive Disc	1
19	EE-4	Front Friction Disc	1
20	EE-2	Drum Mounting Plate	1
21	EE-5	Rear Friction Disc	1
22	CSHH142034	1/4-20 x 3/4 Hex Head Capscrew	4
23	LW14	Lockwasher	4
24	SS51618516	5/16-18 x 5/16 Set Screw	2
25	EE-6	10" Pulley	1
26	EE-1	Drive Shaft	1
27	N-15	Clutch Key	1
28	4L390	V-Belt	1
	EF-1A****	Frame Assembly	1
29	EF-1	Welded Frame	1
30	EE-14	Rubber Tips	2
31	EE-8	Retainer Pin Collar	1
32	SS103218	10-32 x 1/8 Set Screw	1
33	EE-15	Retainer Pin Spring	1
34	EE-7	Retainer Pin	1
35	EE-9	Motor Tension Spring	1
36	R23*****	Motor Mount	1
37	R22*****	Adapter Plate	1
38	EE-12	Belt Guard	1
39	CSHH516181	Motor Mount Capscrews	4
40	WA516S	Motor Mount Flatwashers	4

MODEL E DRAIN CLEANING MACHINE

ITEM NUMBER	PART NUMBER	DESCRIPTION	AMT
41	LW516	Motor Mount Lockwashers	4
42	NU51618FHP	Motor Mount Nuts.	4
43	N-8	Motor Pulley	1
44	EM-1/3	1/3 H.P. Motor w/Fwd-Rev Switch	1
45	GFCI	Ground Fault Circuit Interrupter w/Cord . . .	1
46	FP-1A*****	Air Foot Pedal Transmitter w/Air Hose	1
47	FP-1	Foot Pedal Only.	1
48	FP-2	Air Hose Only	1
49	TBS3218	Air Activated On/Off Switch.	1
50	SW-FR	Forward/Reverse Switch	1
51	SW-FRP	Forward/Reverse Switch Plate	1
52	SW-BOOT	Toggle Switch Boot.	1
53	TSC12	Two-Screw Connector.	1
54	OBSS243220	Rear Bronze Bushing	1
55	OBSF243216	Front Bronze Bushing	1
56	DL6CAP	Cord Hook Cap	2
57	SS5162458DP*****	5/16-24 Set Screw Dog Point	1
58	NU51624FHP*****	5/16-24 Hex Nut	1

* Includes Item 4

** Includes Items 9-14

*** Includes Items 15-27

**** Includes Items 29-37 and 54-58

***** Includes Items 47 and 48

***** Prior to Serial No. 6629, Item 36 part no. is EE-10 and Item 37 part no. is EE-11.

***** Added to assembly, beginning with Serial No. 8141.